





## SKILL LEVEL

Intermediate

## SIZE

One size

## FINISHED MEASUREMENTS

Approx. 82¾ x 5¼ in / 210 x 13.5 cm

## YARN

CYCA #2, Schachenmayr Original Micro or equivalent (158 yd/144 m / 50 g; 100% microfiber)

## YARN AMOUNTS

White 01, 50 g

Purple 48, 150 g

## NEEDLES

U.S. sizes 2-3 / 3 mm: 60 in / 150 cm circular

## NOTIONS

4 stitch markers

## GAUGE

24 sts and 33 rows in double knitting = 4 x 4 in / 10 x 10 cm.

Adjust needle size to obtain correct gauge if necessary.

## PATTERN STITCH

Double knitting worked back and forth in rows

# Polka Dot Reversible Scarf

## switch it up

## Instructions

With a single strand of Purple, CO 634 sts (see page 74).

Setup row: \*With White k1, with Purple p1 (1 st pair made); rep from \* across—317 stitch pairs.

Divide the sts into 5 segments, placing a marker after every 63 stitch pairs.

Work in double knitting following the chart: work selvedge st, beg each section with the st before the repeat, work the repeat section 3 times, and end with the st after the repeat, work selvedge st. Work a one-color selvedge. Work Rows 1-44 of chart once, increasing 2 sts per segment every other row as shown.

BO in Purple.

## Finishing

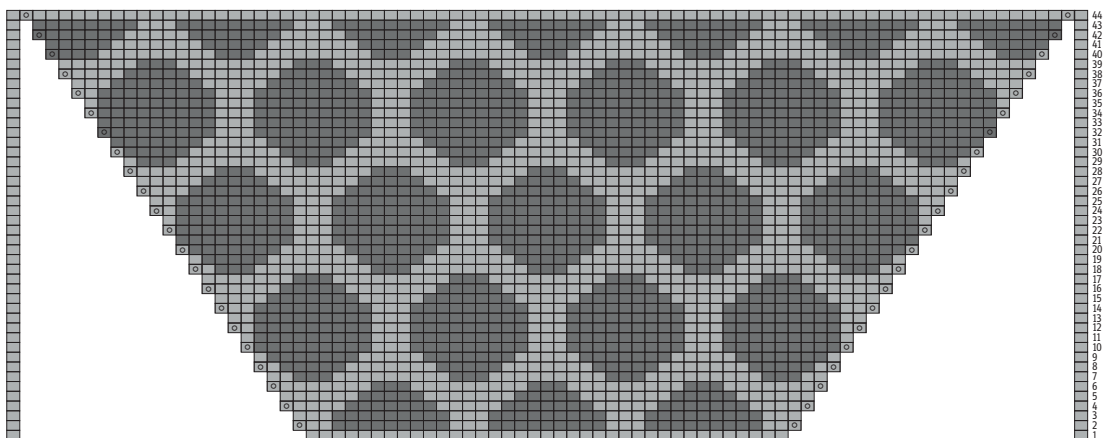
Weave in ends.

## My Tips for You

**Changing length** The pattern is worked over a multiple of 12+1. To lengthen or shorten the scarf, simply add or remove multiples of 12 from each segment.

**Casting on** Cast on with 1 strand from each ball to avoid having to measure yarn for the long-tail cast-on.

○ = Make 1 new stitch pair with yarnover inc (see page 76)



Repeat = 12 sts