

Black and White Hand Towels with Color Effects

DESIGN AND WEAVING: WINNIE POULSEN

An exciting color-effect pattern woven with 8 shafts and 9 treadles. The edges and hems have a “salt and pepper” color effect.

TECHNIQUE

Color effect
8 shafts and 9 treadles

MATERIALS

WARP Blomqvist/Nordiska Textile Yarns 22/2 cottolin, 6,400 m/kg: unbleached and black 209

WEFT Same as for warp + Blomqvist/Nordiska Textile Yarns 16/2 unbleached cotton for hems

REED 40/10 (metric), 1 end per heddle -2 ends per dent

SETT 8 ends per 1 cm (20 epi US)

SELVEDGE A floating selvedge of 4 ends in reed but not heddles. Hang one weight on the floating selvages and another on the edge threads in heddle so that they are tighter than the rest of the warp ends.

WIDTH IN REED 54 cm (21¼ in)

WOVEN LENGTH about 105 cm (41¼ in) + hems

FINISHED MEASUREMENTS 49 x 95 cm (19¼ x 37½ in), after washing

WEFT SETT 8 picks per 1 cm (¾ in)

NR. OF ENDS 443

WARP REQUIRED per meter: 35 g (1¼ oz) unbleached, 33 g (1.2 oz) black

WEFT REQUIRED per meter: 35 g (1¼ oz) unbleached, 33 g (1.2 oz) black + unbleached 16/2 cotton for hems

WEAVING

Weave following the weft sequence. Treadle 9 is used only for the plain weave hems. If your loom doesn't have a ninth treadle, you can tie treadle 7 for tabby by removing the first shaft and tying to it while weaving the color effect. Sew hems by hand. Weave the loop with 16/2 cotton (see warp sequence):

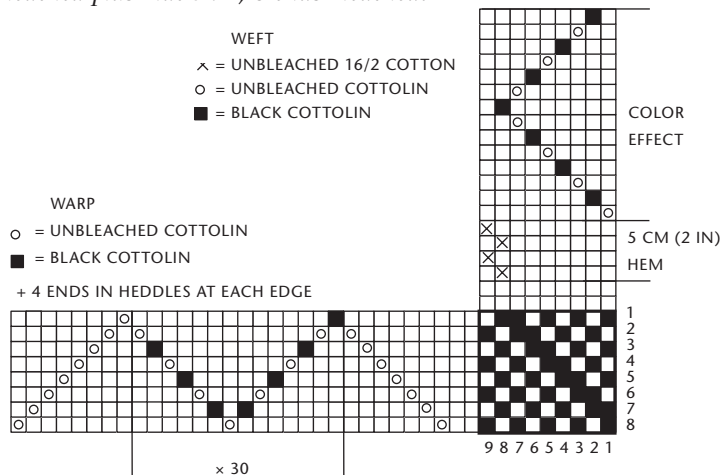


Warp sequence for loop: 8 ends bleached, bleached plus black x 4, 8 ends bleached.

WARP SEQUENCE

UNBLEACHED	12	210	11
BLACK		210	

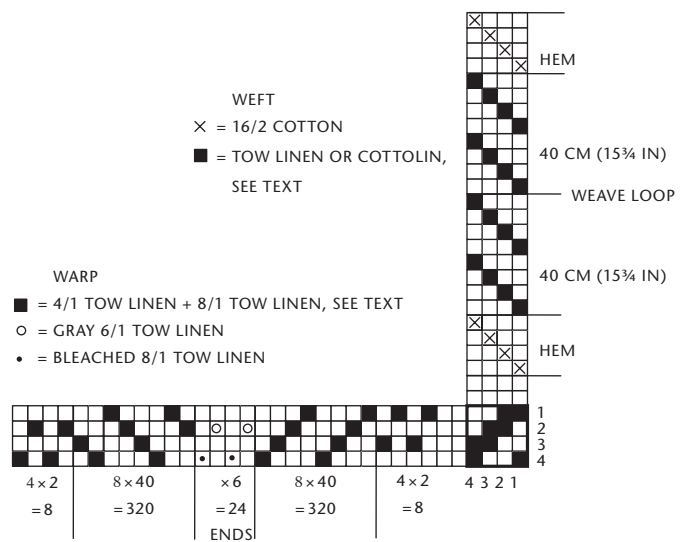
NOTE: The selvedge ends are warped separately and weighted.





just a few wefts at a time with each type of yarn. A thick yarn can be combined with a thin yarn for a fine, little bubble effect. Light weft woven with dark makes a striped weaving, etc.

The loop (about 10 cm (4 in) long) is woven when the towel has been half way woven (4.5 cm (1¾ in) for the hem + 40 cm (15¾ in). The loop is woven with 8/1 tow linen as for the weft and on treadles 1 and 3. When the loop has been woven, pin it securely to the weaving and weave the other half of the towel.



Heart Blanket with Weft Loop Patterning

DESIGN AND WEAVING: GUNILLA ÖSTERBERG

A little baby blanket woven with velour yarn and embellished with weft loops forming a heart and edgings.

TECHNIQUE

Tabby with pattern loops
4 shafts and 2 treadles

MATERIALS

WARP	Borg's Weaving Yarns unbleached 16/2 cotton, 12,800 m/kg
WEFT	Borg's Weaving Yarns Velour yarn, about 1,800 m/kg: white 1020 Hems: 16/2 cotton as for warp
REED	80/10 (metric), 1 end per heddle -1 end per dent
SETT	8 ends per 1 cm (20 epi US)
SSELVEDGE	4 ends in dent on each side
WIDTH IN REED	70 cm (27½ in)
FINISHED	
MEASUREMENTS	68 x 90 cm (26¾ x 35½ in)
WEFT SETT	10 picks per 1 cm (¾ in)
NR. OF ENDS	568
WARP REQUIRED	per meter: 45 g (1.6 oz)
WEFT REQUIRED	per blanket 90 cm (35½ in) long: about 400 g (14.11 oz) (including extra for loops)



WEAVING

The background is woven in tabby. Weave 2 cm (¾ in) for hem with 16/2 unbleached cotton. Weave 5 shots tabby with velour yarn. Next, weave 5 rows of weft loops as follows:

To form the loops, bring the velour yarn up between warp threads (see drawing). Use a dowel (or several) about 5 mm (¼ in) diameter so that all the loops will be the same height. Leave the dowels in place while you work a couple of weft shots with the background yarn and then remove them. Wrap the loops from the right on the first loop row and from the left in the next loop row. Leave 4 warp ends between each loop. Between each loop row weave 5 tabby shots.

To frame the blanket, make 5 loops at each edge. In the center of the blanket, shape a pattern with loops. Cut out desired pattern on paper and use it to guide weaving. Weave until the blanket measures about 85 cm (33½ in). Weave 5 rows of loops as above and end with 5 weft shots with velour yarn and then 2 cm (¾ in) hem.

FINISHING

Turn hem to wrong side and sew down by hand.

